



Reliability Since 1921

The standard 5 HP (3.7 Kw) motor, and heavy duty stainless steel construction helps the Model 55 hold up under the harshest conditions. The Model 55 is unmatched for versatility and superior BIRO engineering which means you will have a saw that is built to last. As with all BIRO products, if you need a particular modification to fit your application let us know. We will try to build it for you - something only BIRO does.

Model 55
Standard configuration
(Front moving carriage)
19-3/8" L. x 28-3/8" W.
(Rear platter)
24" L. x 47" W.



Model 55
Optional configuration
(Stationary front table)
19" L. x 47-7/8" W.
(Rear platter)
24" L. x 47-7/8" W.



Model 55
Optional configuration
(Roller conveyor tops)
20" L. x 36" W. Each



Model 55
Optional configuration
(Double rolling tables)
25-5/8" L. x 42" W. Total



55 Series

MODEL SPECIFICATIONS

Model: 55 Power Cutter (Breaking saw - 22" Dia. Wheels)

Construction: Heavy duty stainless steel, 8 Gauge (4.2mm), base & fixed head.

Motors:

HP	TYPE	VOLTS	AMPS	CYCLE	PH	STATUS
5	TEFC	208-230/460	14.4-13/6.49	60	3	STD
5	TEFC	220/380-415	14.1/7.88-7.47	50	3	STD
5	TEFC	575	5.16	60	3	EC
7.5	TEFC	208-230/460	20-19/9.5	60	3	EC

TEFC = Totally Enclosed Fan Cooled STD = Standard NC= No Charge EC = Extra Cost

Standard Features: Two saw blades, operation and parts manual, safety wall poster, end cut safety pusher plate.

Switch: Watertight magnetic with thermal overload and under voltage protection.

Head and Door: Stainless steel fixed head, removable head door.

Blade Standard: Hard tooth, three teeth per inch (8.5 mm between teeth), 164.5" (4178.3 mm) long x 3/4" (19 mm) wide, .022" (.56 mm) thick (two supplied with each saw).

Blade Speed: 3880 feet (1182 m) per minute approx.

Blade Back-up Guides: Upper and lower blade backup guide assemblies, removable, with long life carbide back-up inserts.

Blade Tension: Factory preset spring with screw handle assembly.

Blade Wheels: 22" (558.8 mm) cast iron, chrome nickel plating, upper wheel assembly lifts out.

Bearings: Heavy duty tapered roller bearings used in upper wheel and lower bearing housings.

Catch Pan: Stainless steel pan sealed off from other parts of base, accessible through base hinged door.

Cleaning Unit: Stainless steel body, long life carbide guide insert, stainless steel saw cleaners, removable as a unit for easy cleaning (assembly also adjustable as a unit).

Drive System: Non slip silent v-belt, tension adjustable.

Legs: Stainless steel legs with discs, adjustable.

Meat Carriage: Stainless steel, EZ-flow movement with ten stainless steel bearings.

Meat Gauge Plate: Stainless steel faced, adjustable from 1/16" (1.59 mm) to 6-1/2" (165 mm) locks in position, can be disengaged, entire assembly removable for cleaning.

Motor Compartment: Sealed off from meat contact areas, easily accessible through removable panel door.

Rear Platter: Split, two piece stainless steel, held in place with push pull hold down stainless steel rod and two knobs for easy removal.

Safety End Cut Pusher Plate: Standard, removable, pusher plate storage hanger provided.

Options (EC): Left to right feed, front moving carriage (opposite of standard), Less meat gauge thickness plate assembly
BOTH RIGHT TO LEFT & LEFT TO RIGHT FEED SAWS HAVE OPTIONAL CONFIGURATIONS: Front and rear stationary tables • front and rear moving tables • front and rear roller top tables • cord and plug (specify cord length) • stainless steel saw blade wheels.

Options (NC): Blade speed: 4200 fpm (1280 m), 5000 fpm (1524 m).

Certification: U.S.D.A.

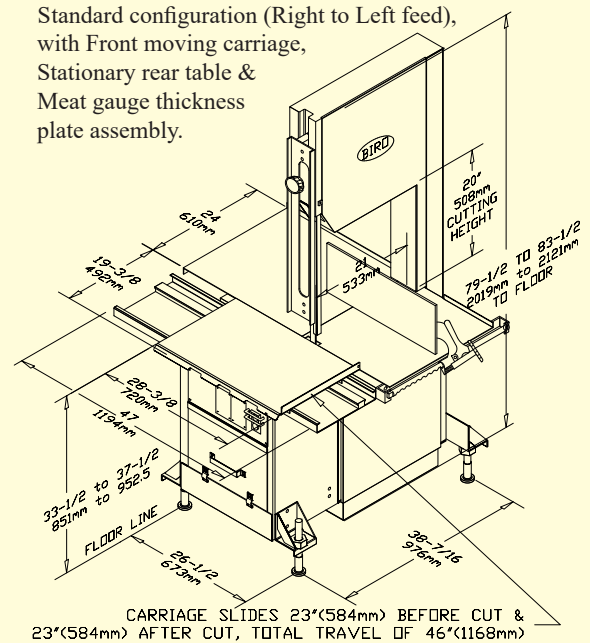
Weight of STD Model: Uncrated: 885 lbs. (401 kg.) approx.

Crated: 1250 lbs (567 kg.) approx. Weight will vary with options.

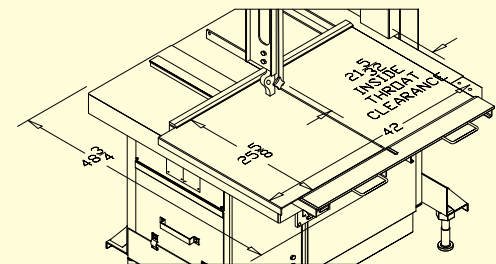
Dims. Crated: L=62"(1575mm), W=60"(1524mm), H=88"(2235mm).

All specifications contained herein are subject to change without notification.

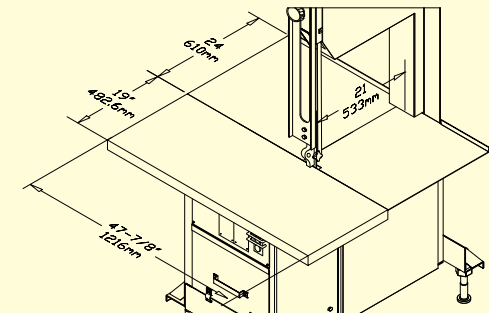
Standard configuration (Right to Left feed), with Front moving carriage, Stationary rear table & Meat gauge thickness plate assembly.



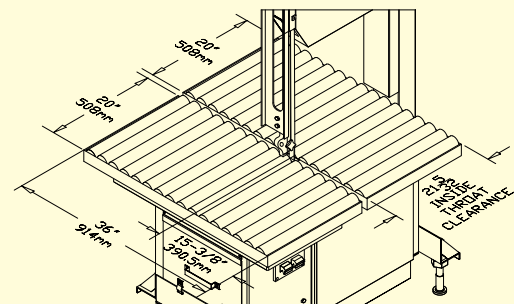
Right to Left feed, with Double (Inside & Outside) rolling tables.



Right to Left feed, with Stationary tables.



Right to Left feed, with 20" Roller conveyor tops.



BIRO MANUFACTURING COMPANY
 1114 WEST MAIN STREET
 MARBLEHEAD, OH 43440-2099 U.S.A.

Phone: (419) 798-4451

www.birosaw.com

Fax: (419) 798-9106

sales@birosaw.com

ITEM NO.: LIT-55 SERIES FORM NO.: LIT-55 SERIES 2-24-2

Service is available from locations worldwide